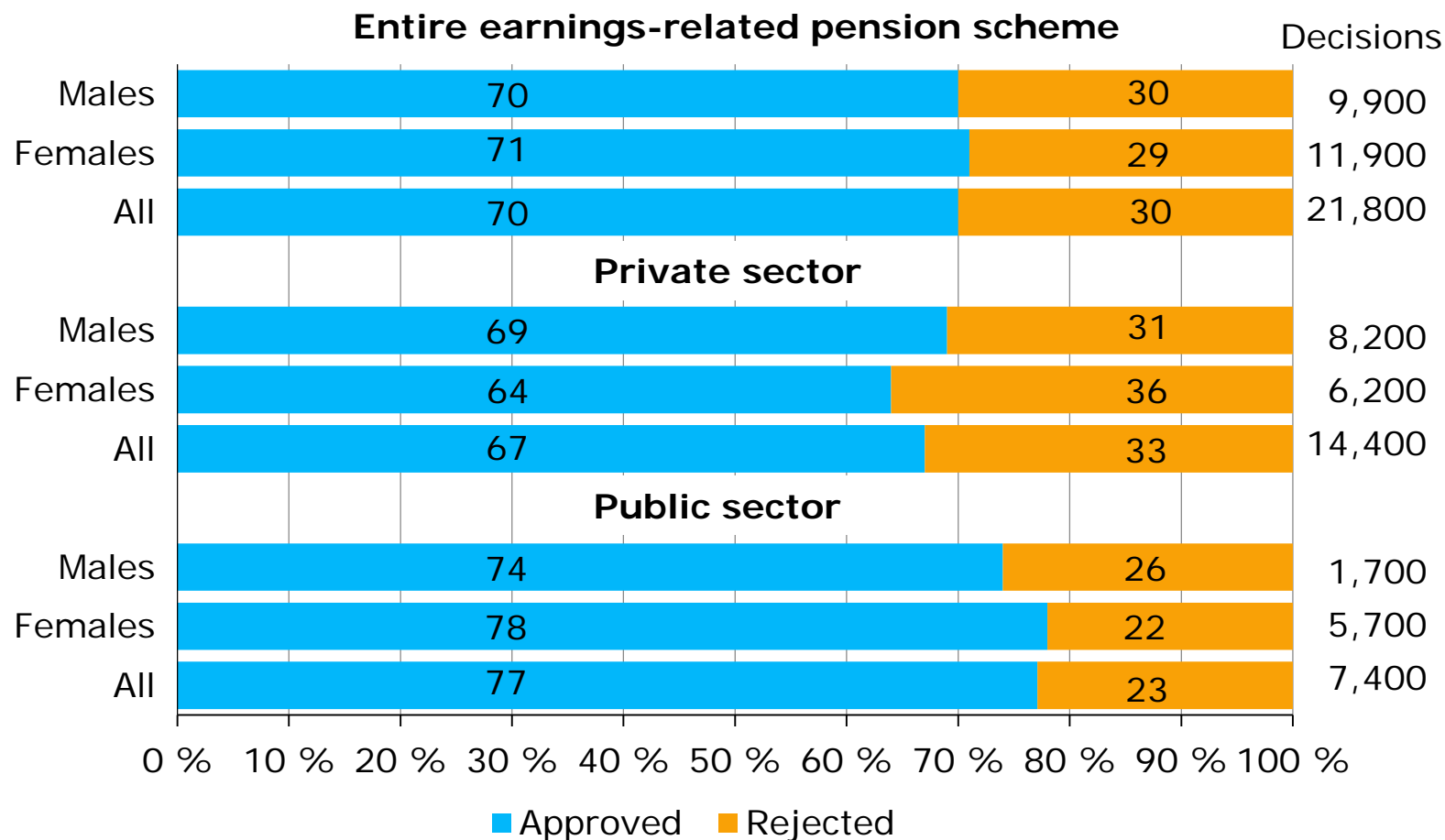


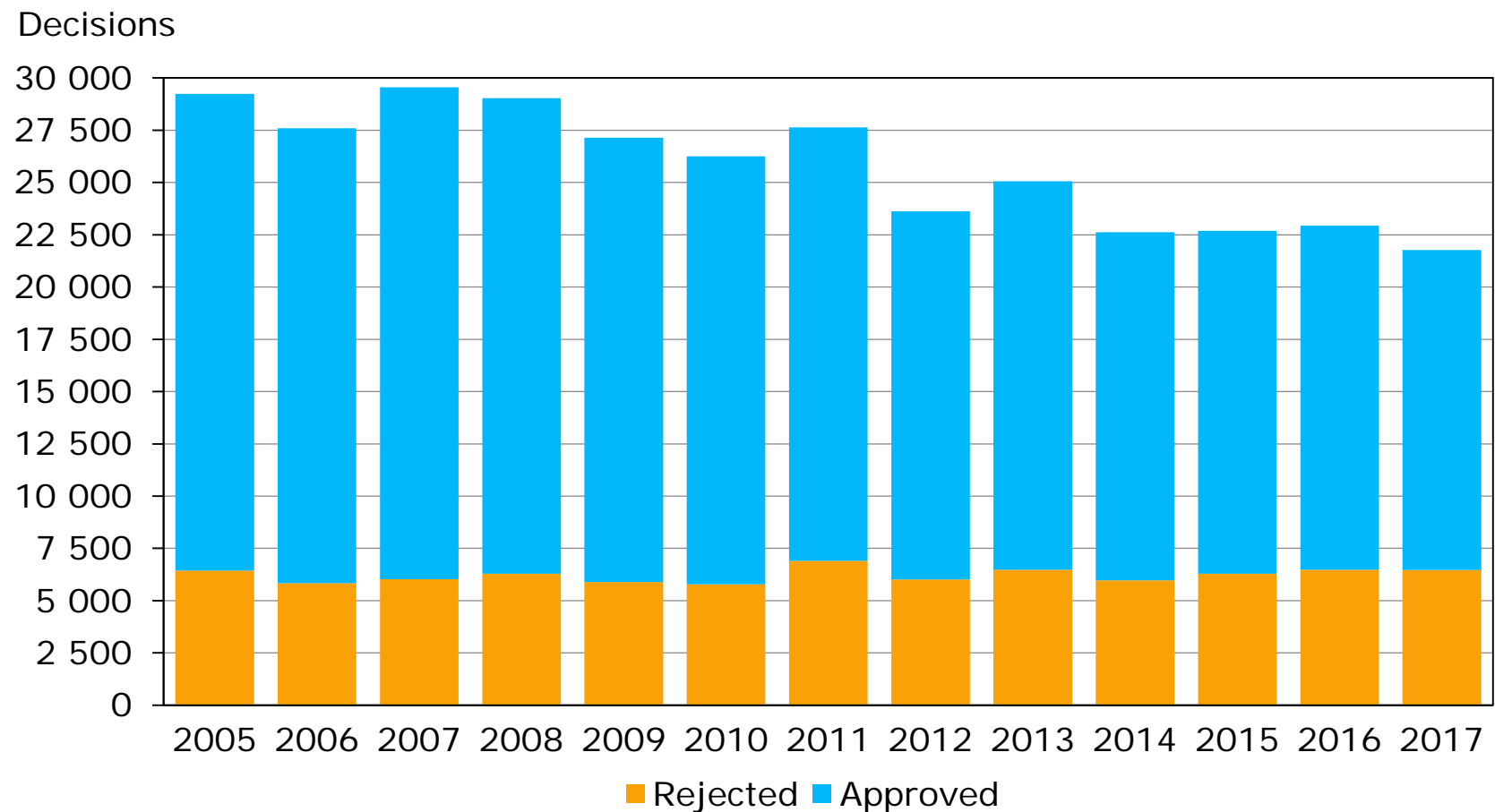
Share of approvals and rejections in disability pension decisions* of the earning-related pension scheme in 2017



*Decisions on new applications



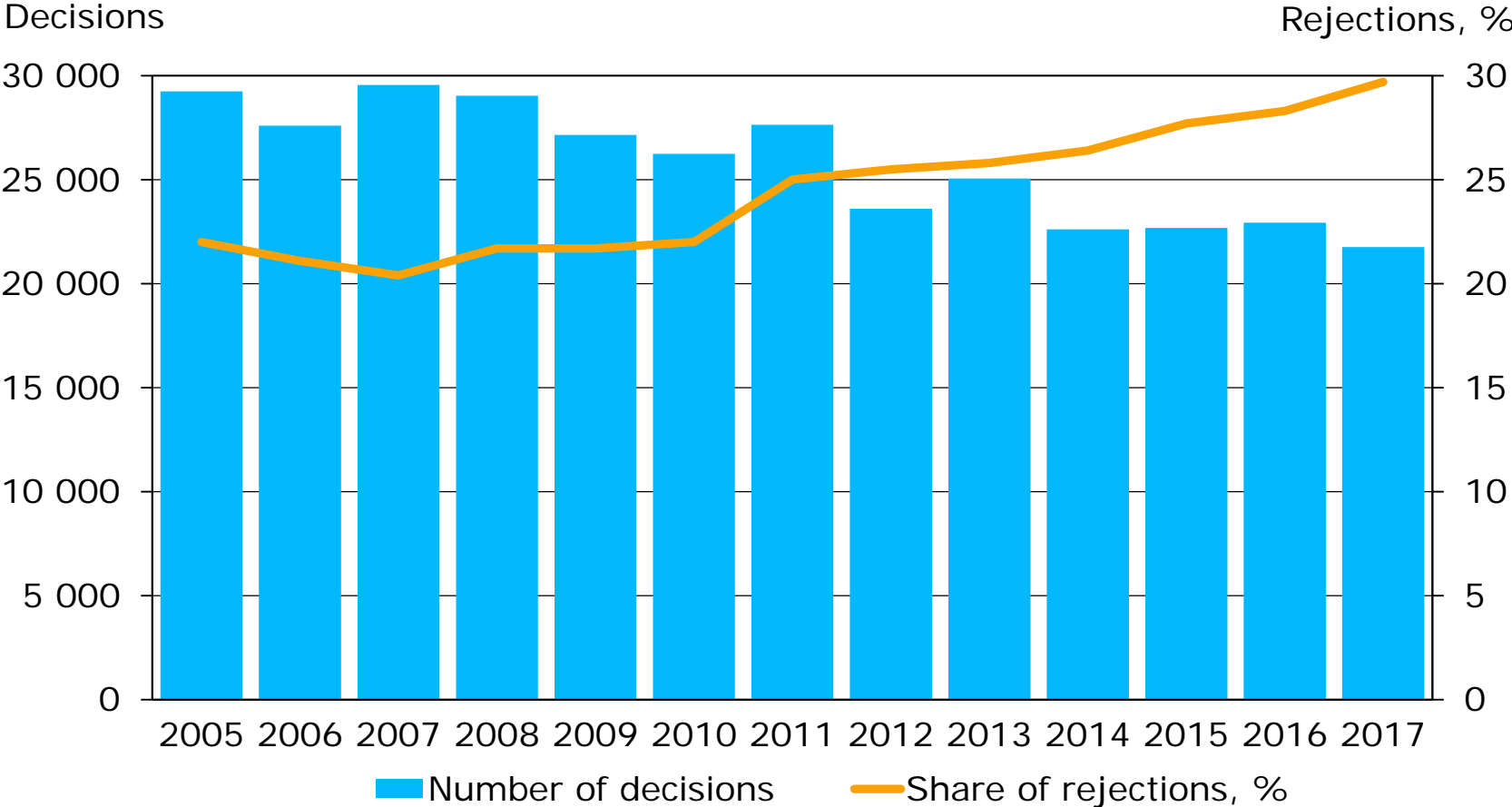
Share of approvals and rejections in disability pension decisions* of the earning-related pension scheme in 2005–2017



*Decisions on new applications



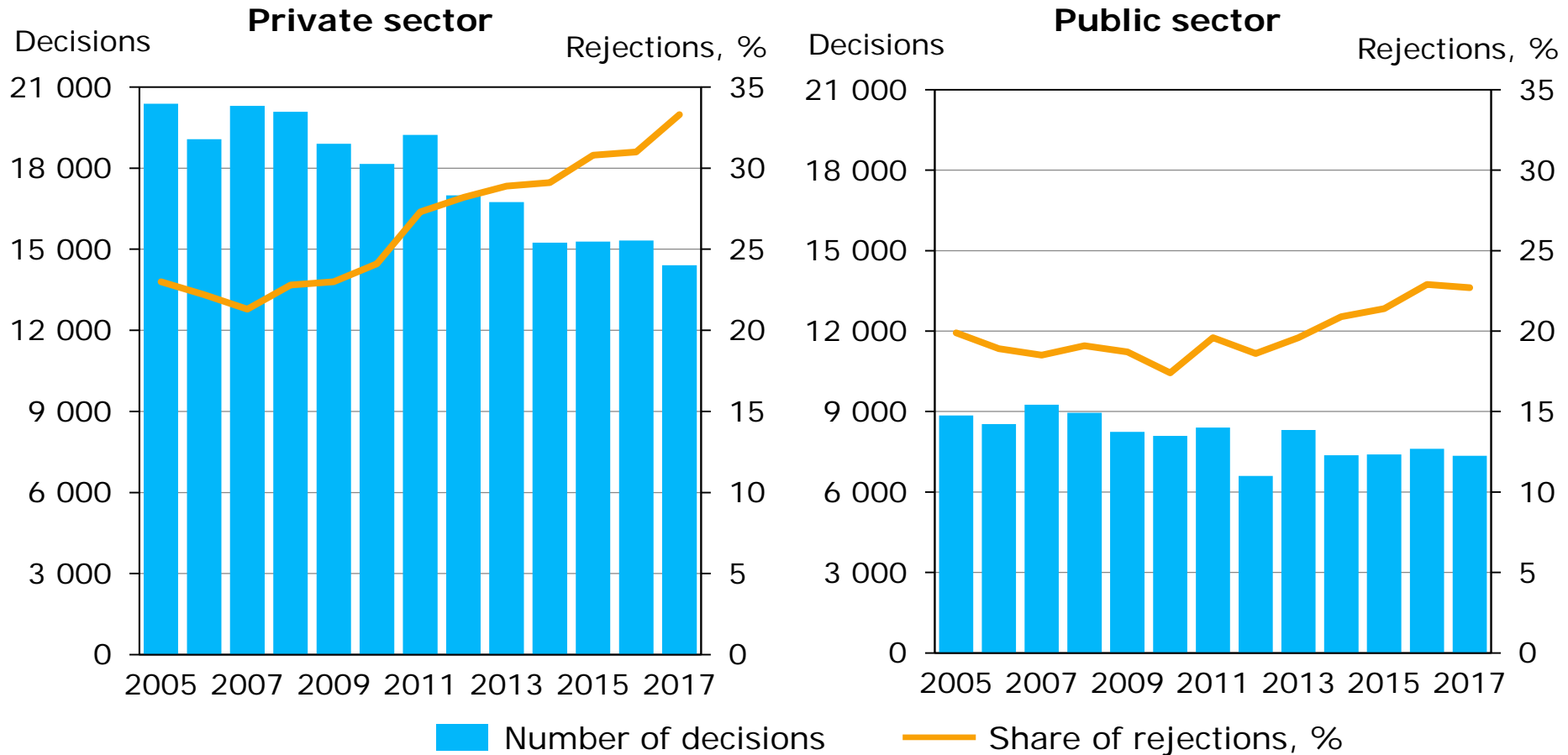
Number of disability pension decisions* in the earnings-related pension scheme and the share of rejections, 2005–2017



*Decisions on new applications



Number of disability pension decisions* in the earnings-related pension scheme and share of rejections according to sector, 2005–2017

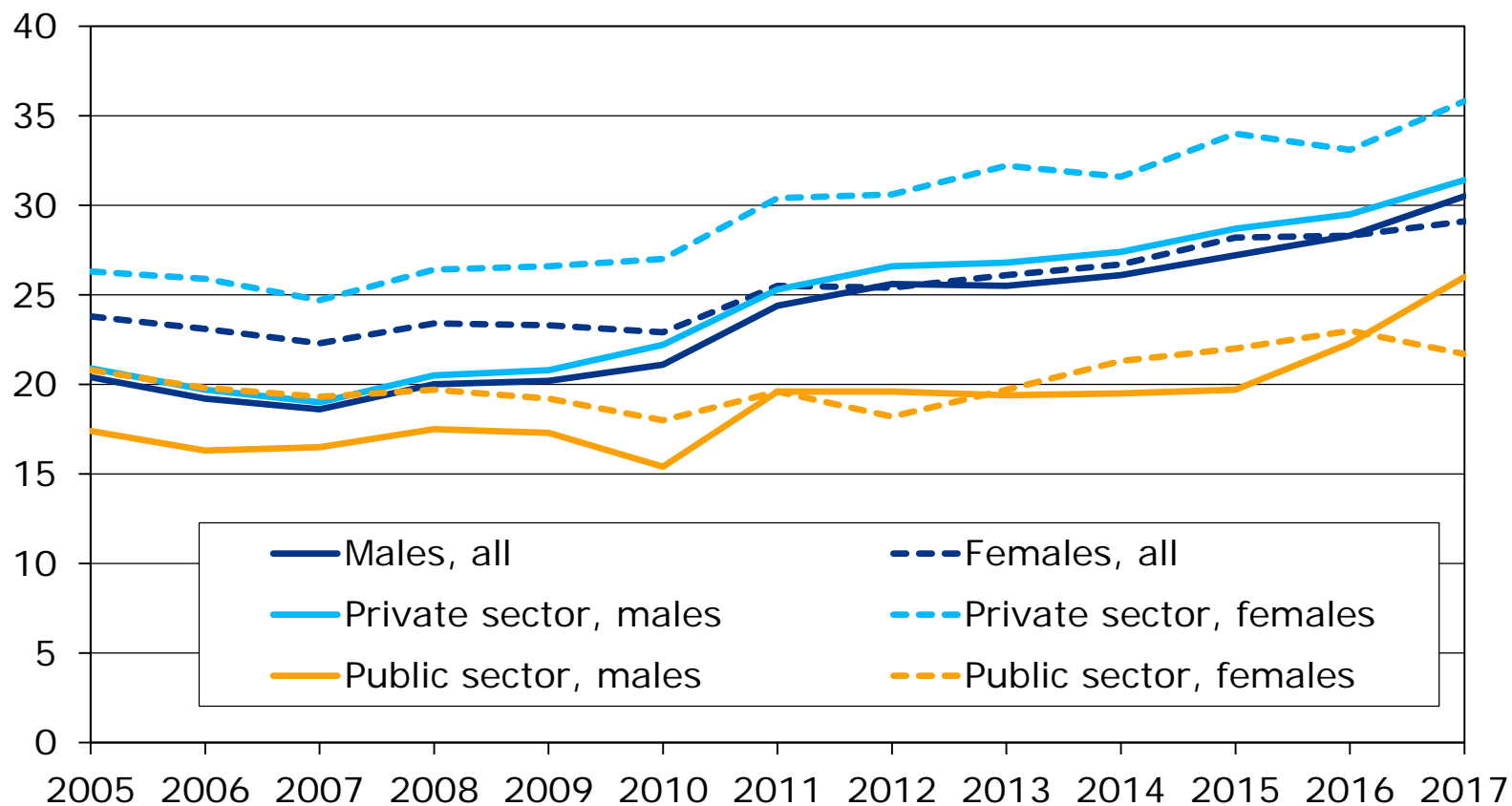


*Decisions on new applications



Share of rejections in disability pension scheme decisions* according to sector and gender, 2005–2017

Share of rejections, %

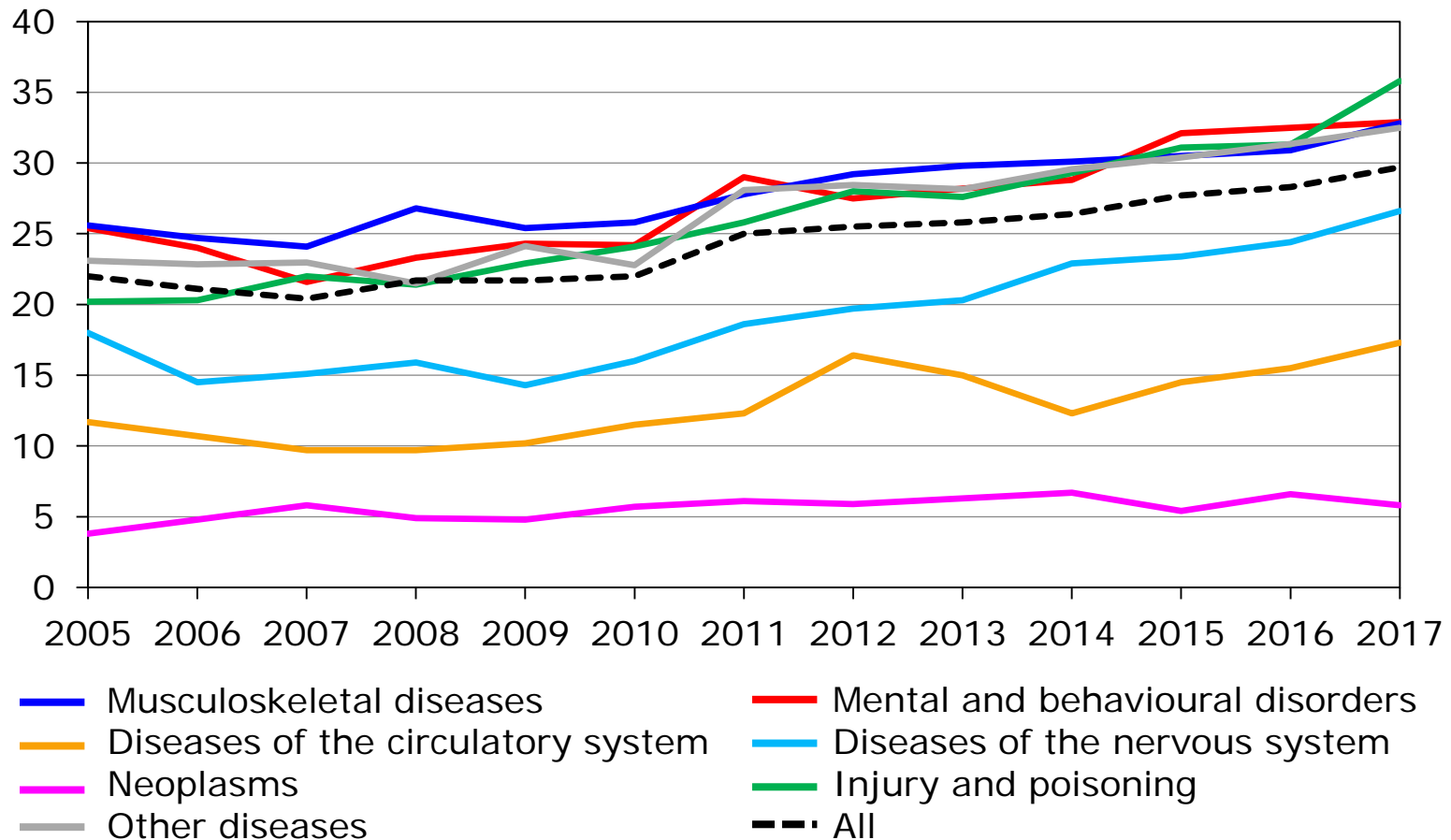


*Decisions on new applications



Share of rejections in disability pension scheme decisions* according to main disease classification, 2005–2017

Share of rejections, %



*Decisions on new applications

