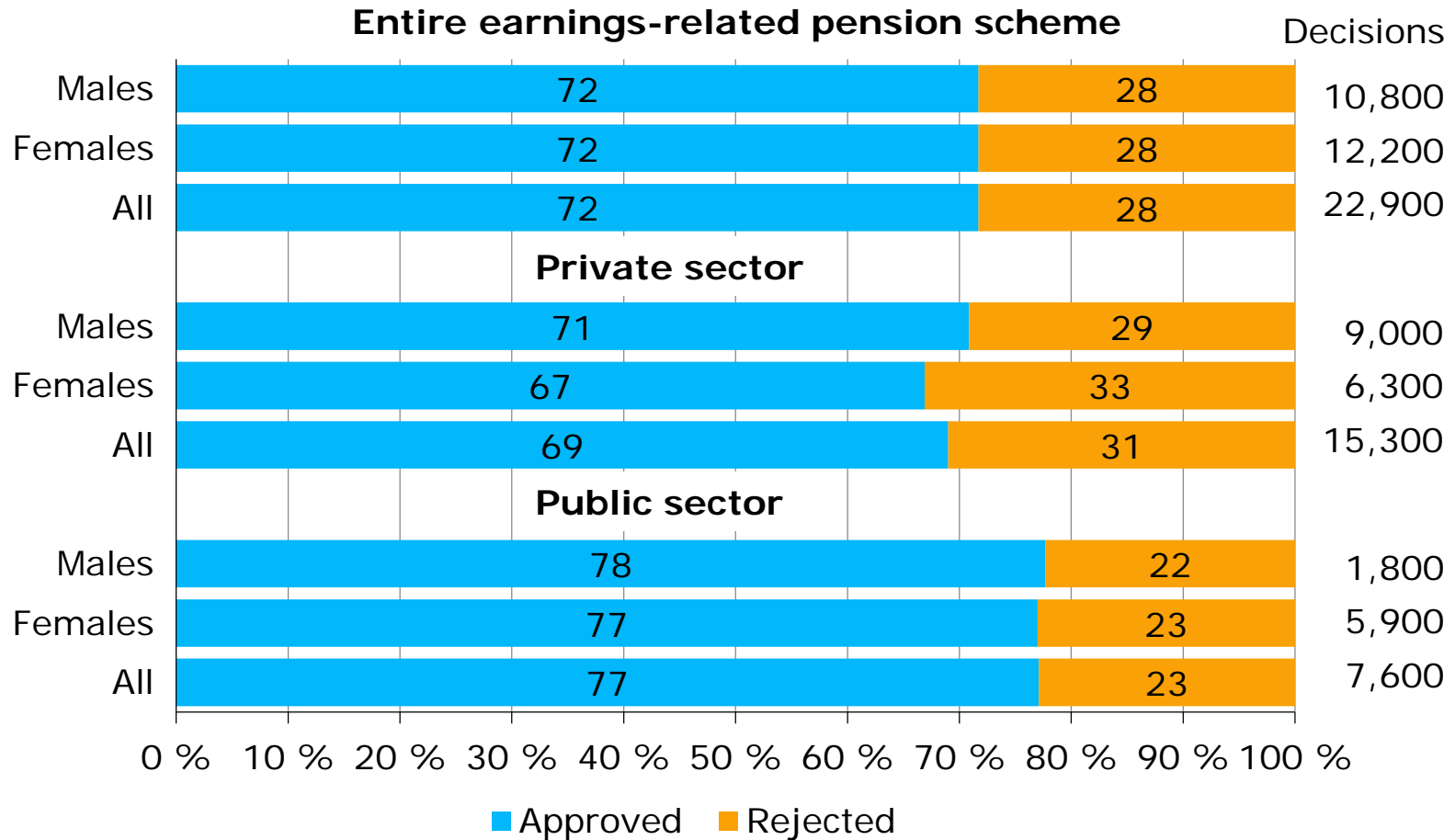


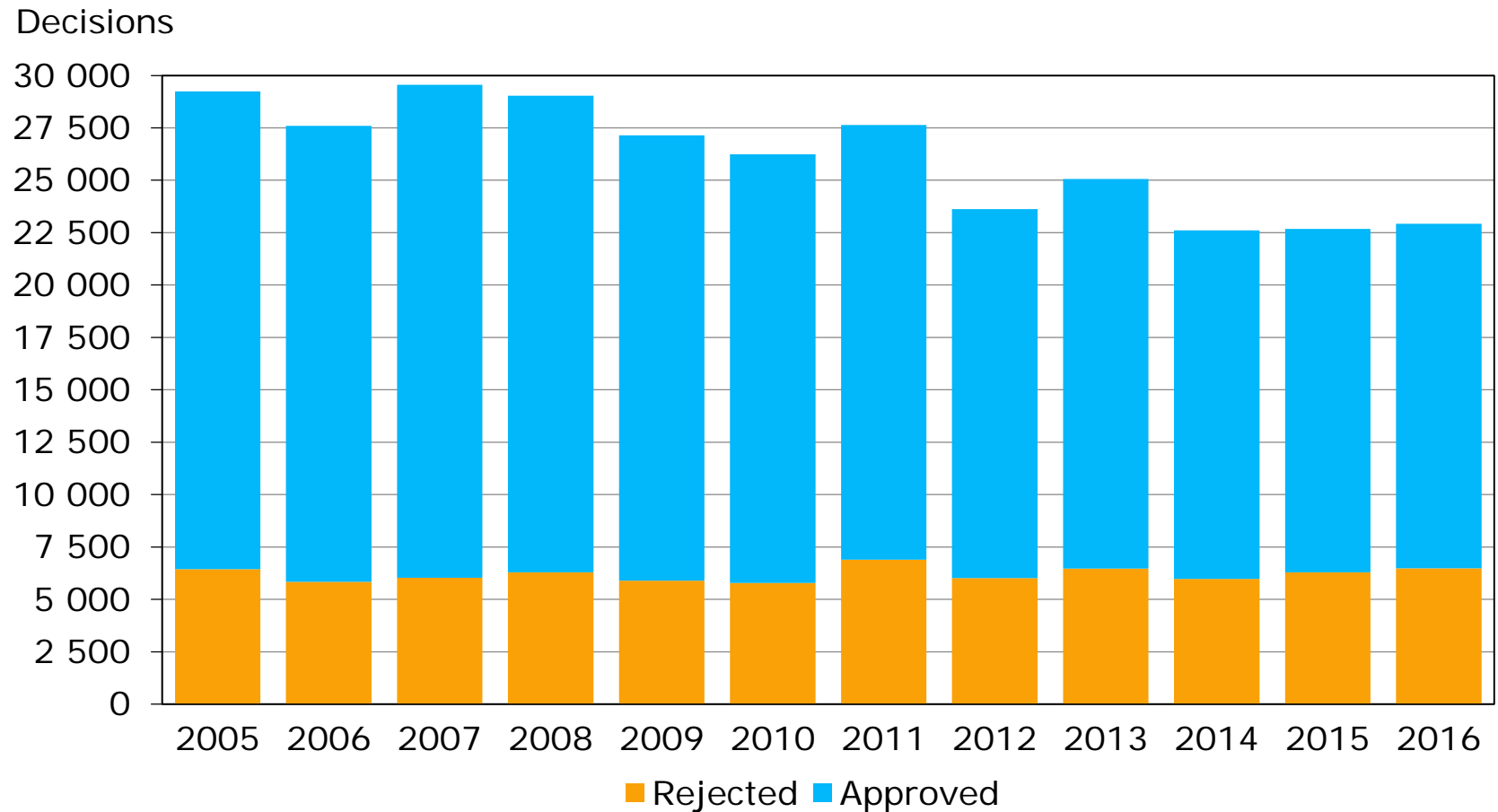
# Share of approvals and rejections in disability pension decisions\* of the earning-related pension scheme in 2016



\*Decisions on new applications



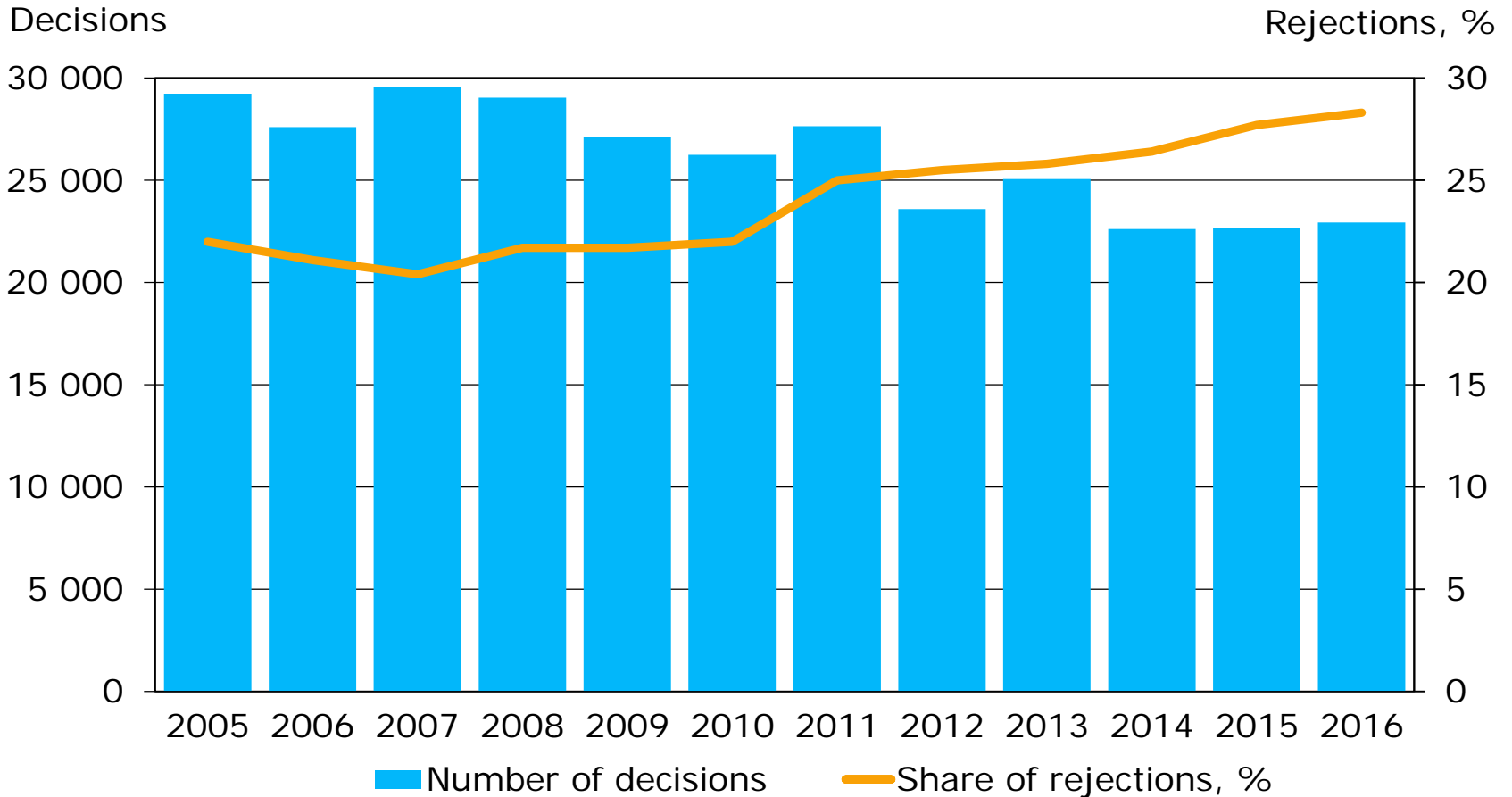
# Share of approvals and rejections in disability pension decisions\* of the earning-related pension scheme in 2005–2016



\*Decisions on new applications



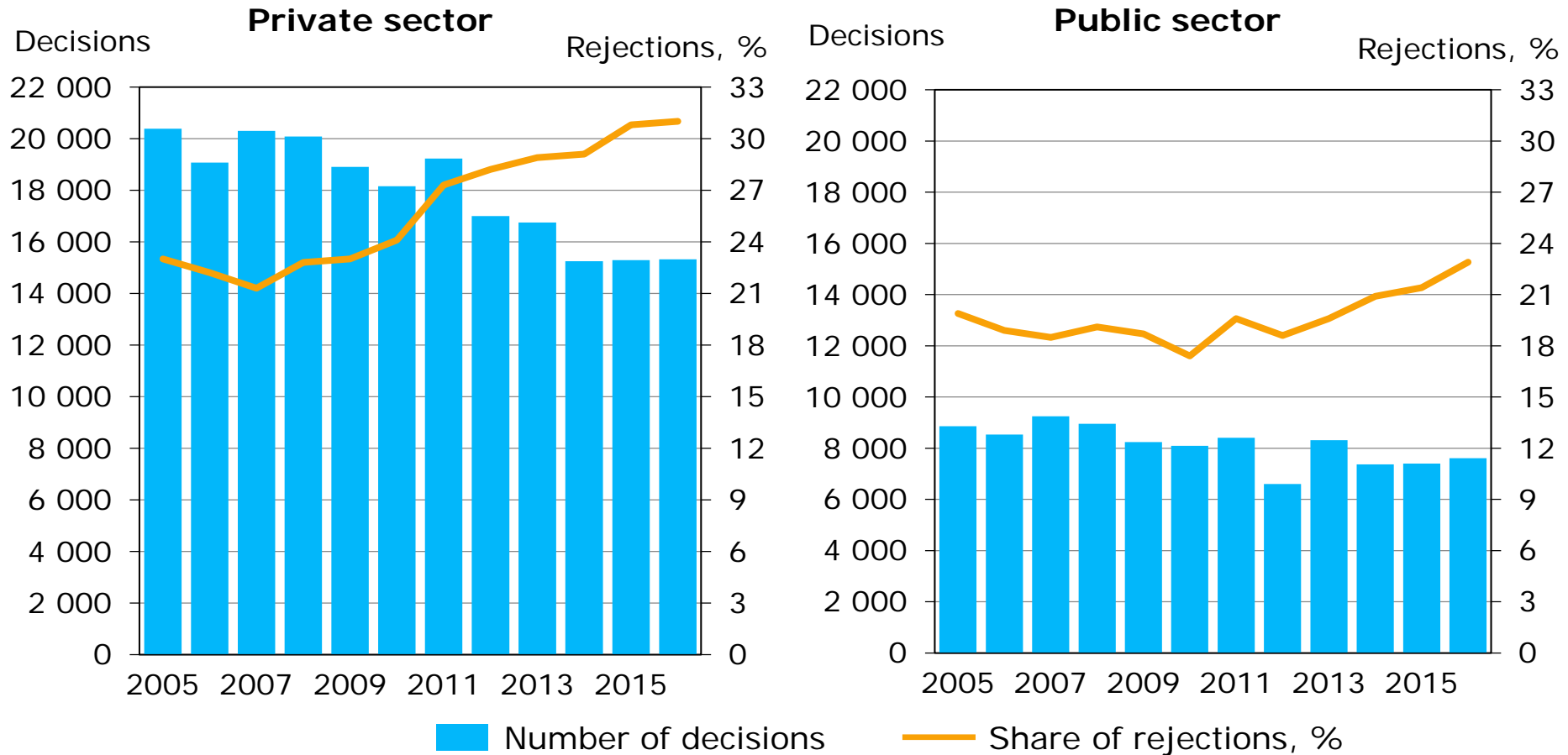
# Number of disability pension decisions\* in the earnings-related pension scheme and the share of rejections, 2005–2016



\*Decisions on new applications



# Number of disability pension decisions\* in the earnings-related pension scheme and share of rejections according to sector, 2005–2016

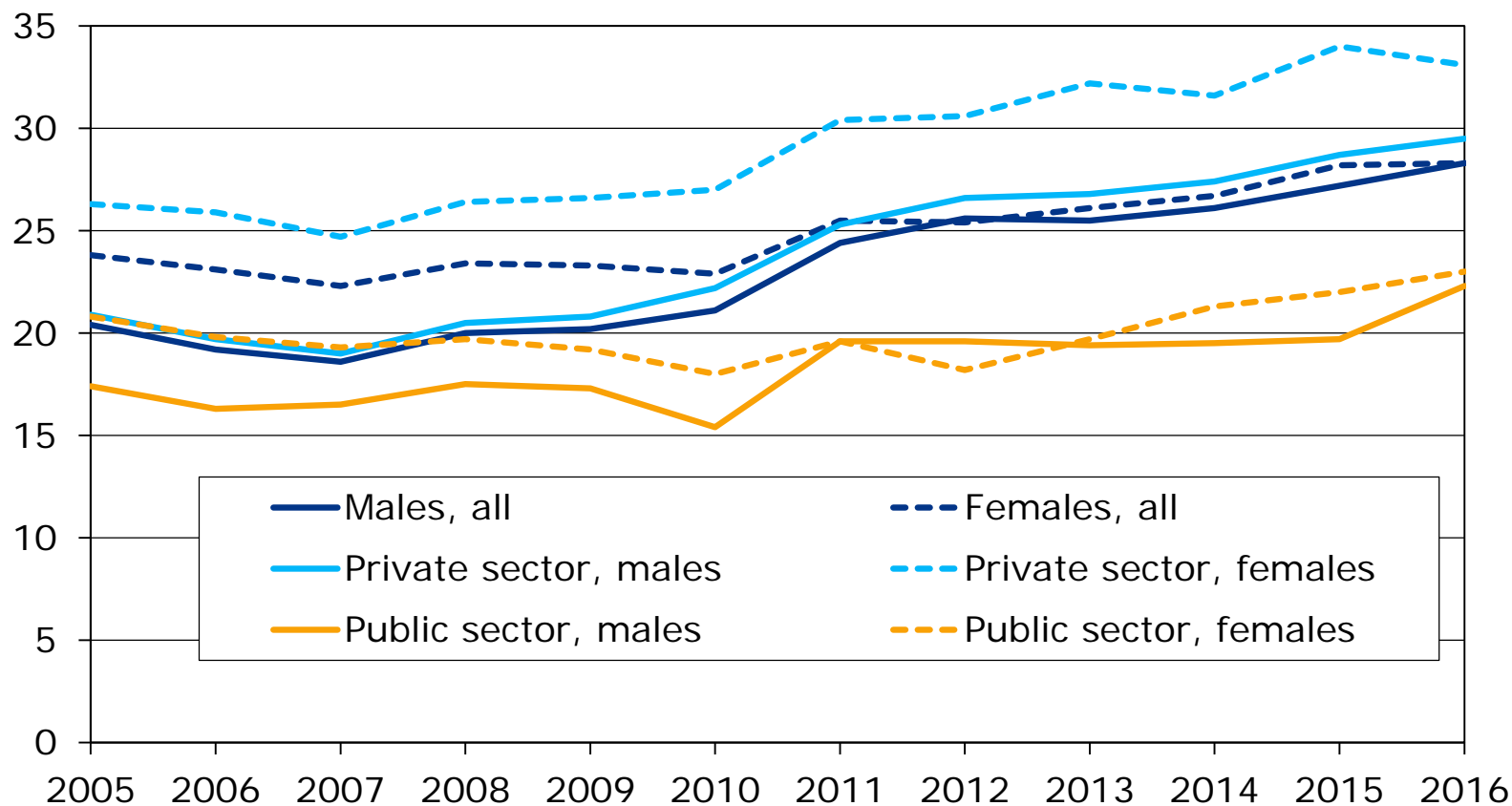


\*Decisions on new applications



# Share of rejections in disability pension scheme decisions\* according to sector and gender, 2005–2016

Share of rejections, %

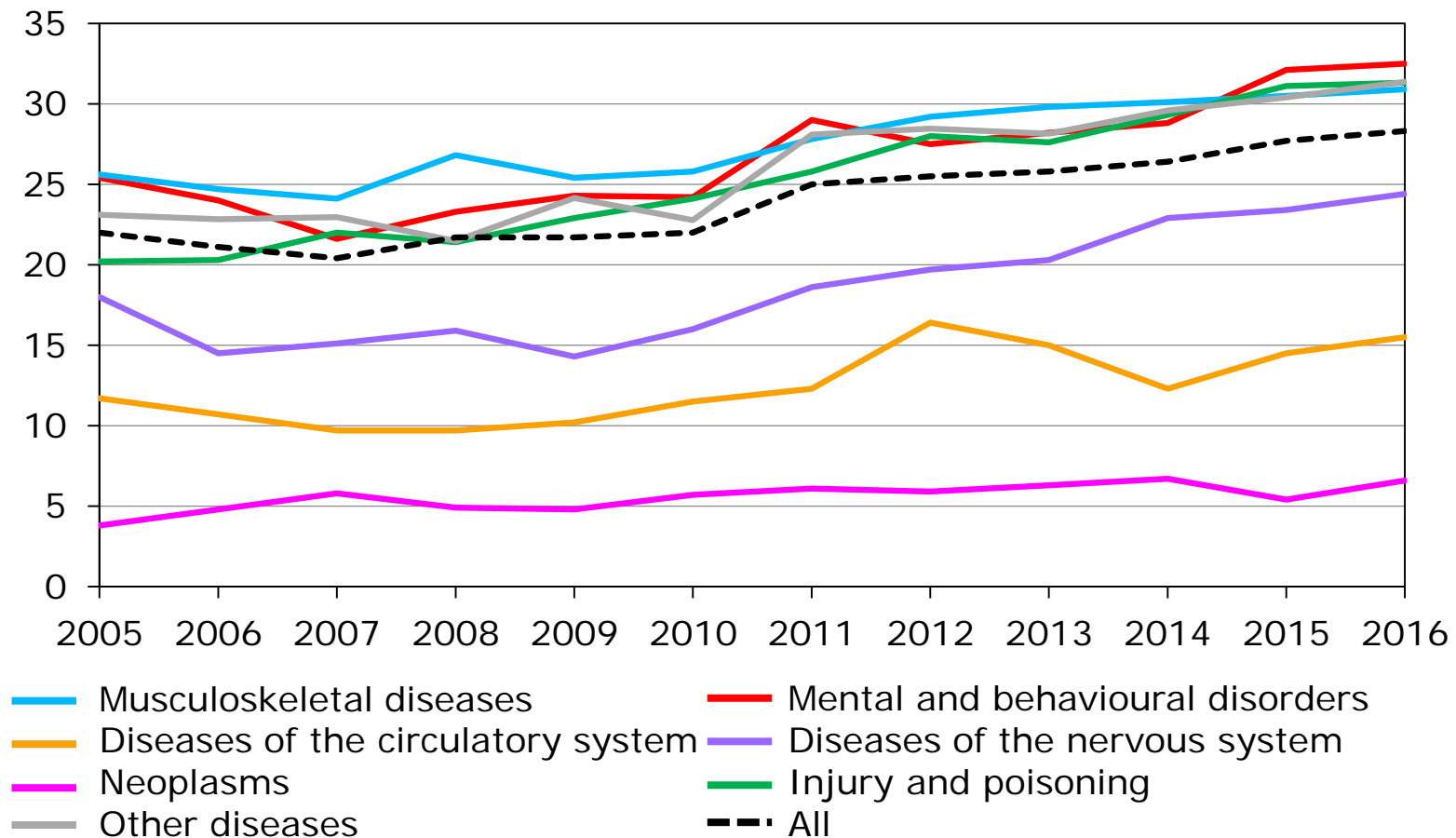


\*Decisions on new applications



# Share of rejections in disability pension scheme decisions\* according to main disease classification, 2005–2016

Share of rejections, %



\*Decisions on new applications

