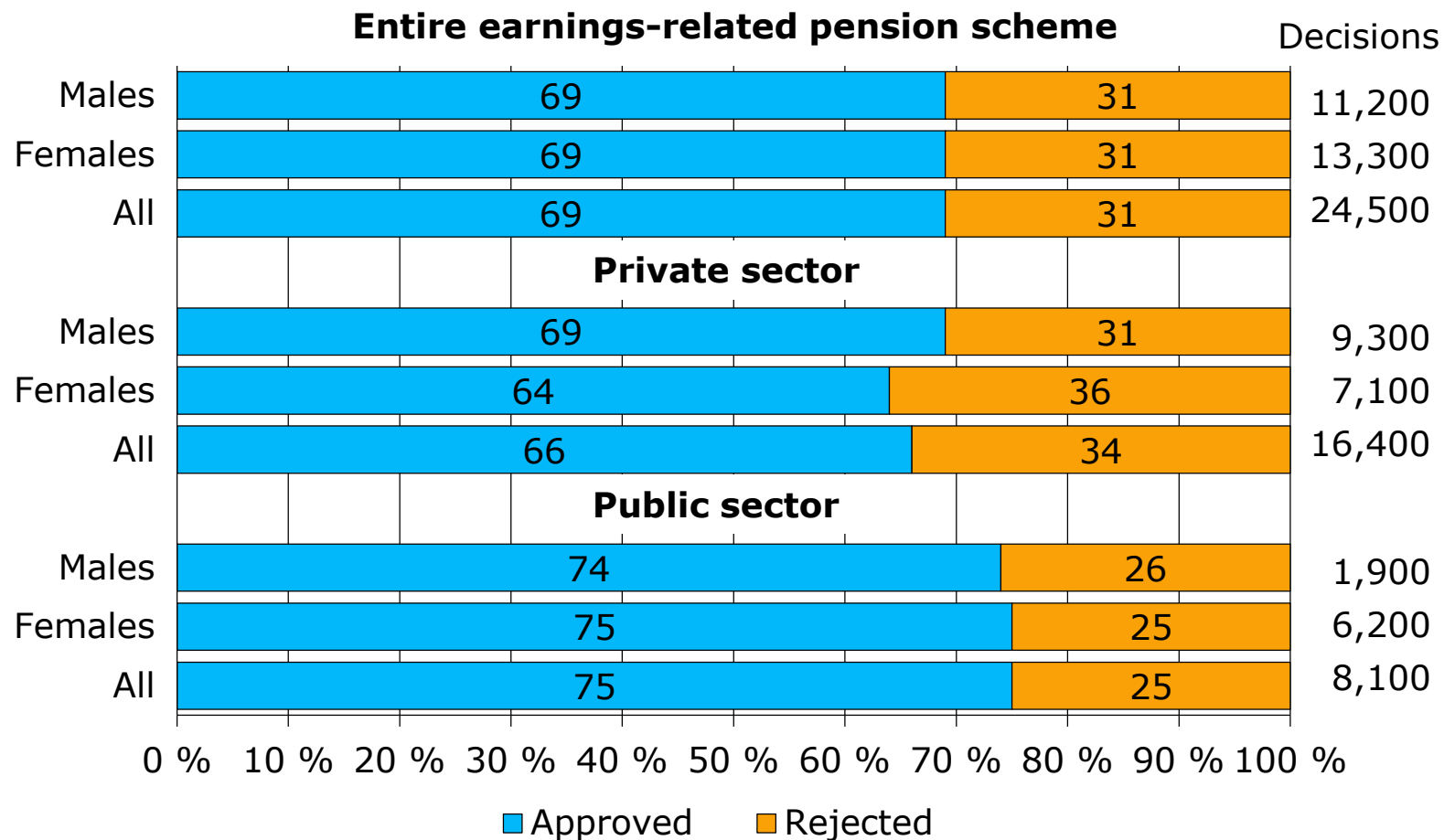


Share of approvals and rejections in disability pension decisions* of the earnings-related pension scheme in 2019

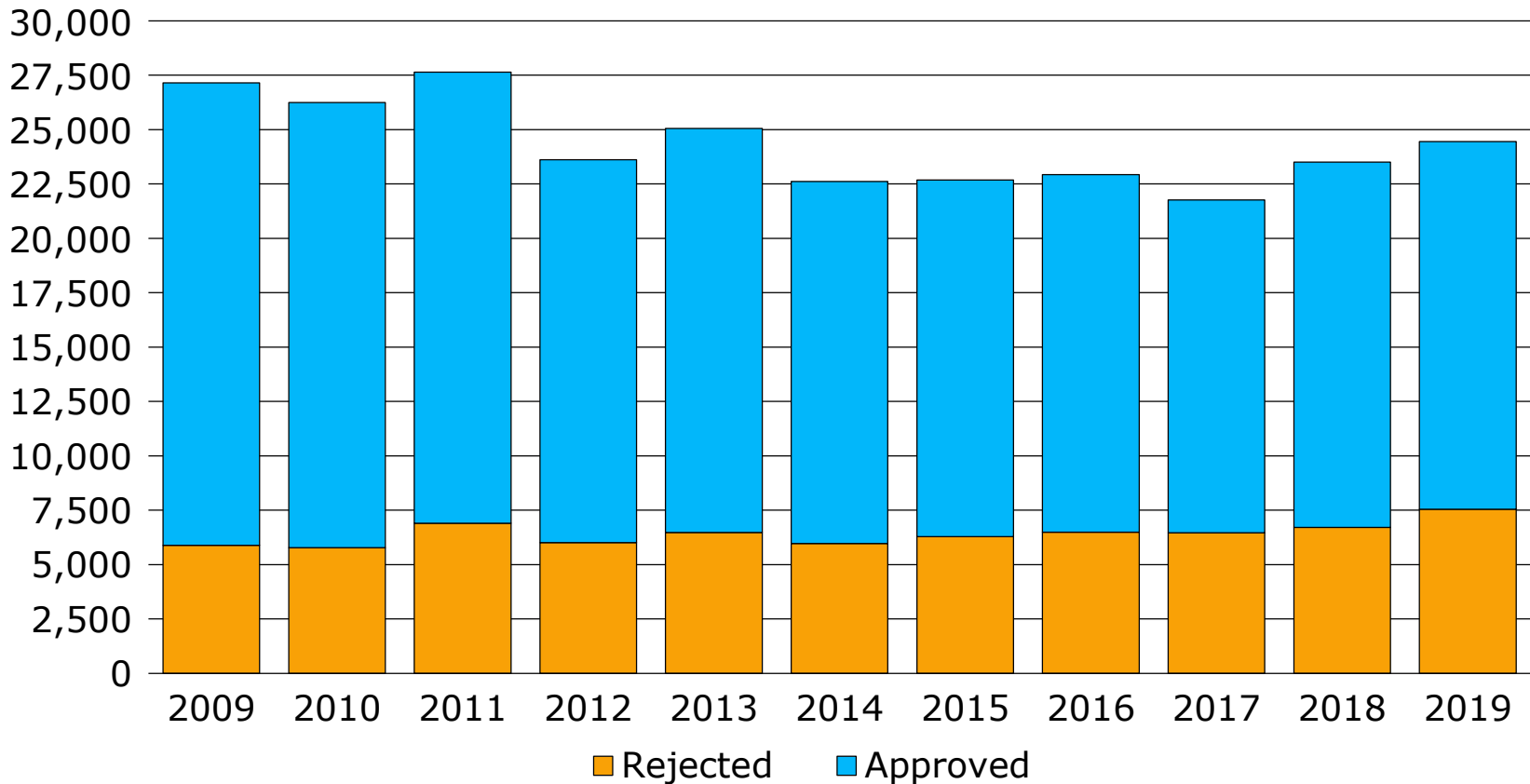


*Decisions on new applications.



Share of approvals and rejections in disability pension decisions* of the earning-related pension scheme in 2009–2019

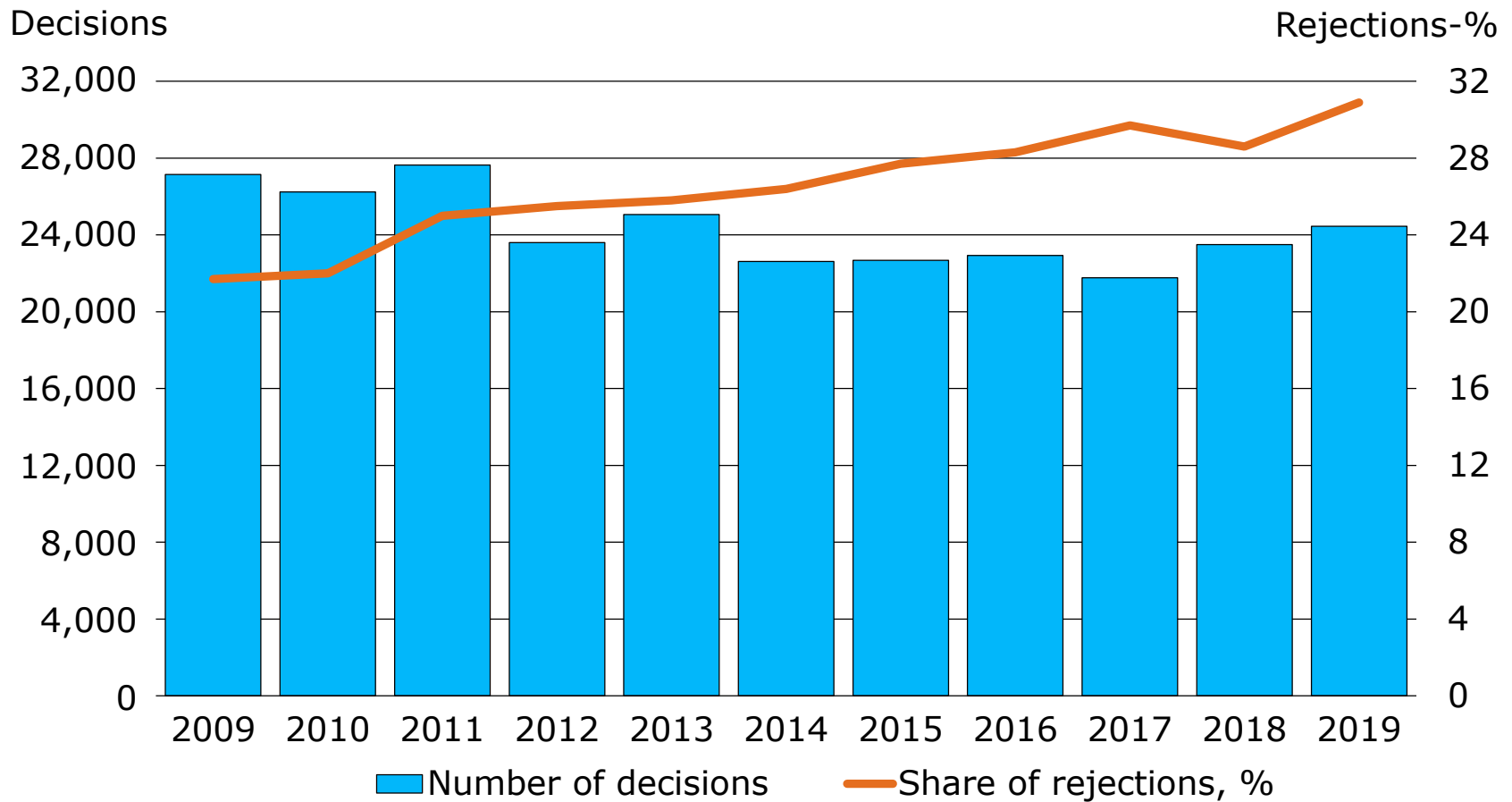
Decisions



*Decisions on new applications.



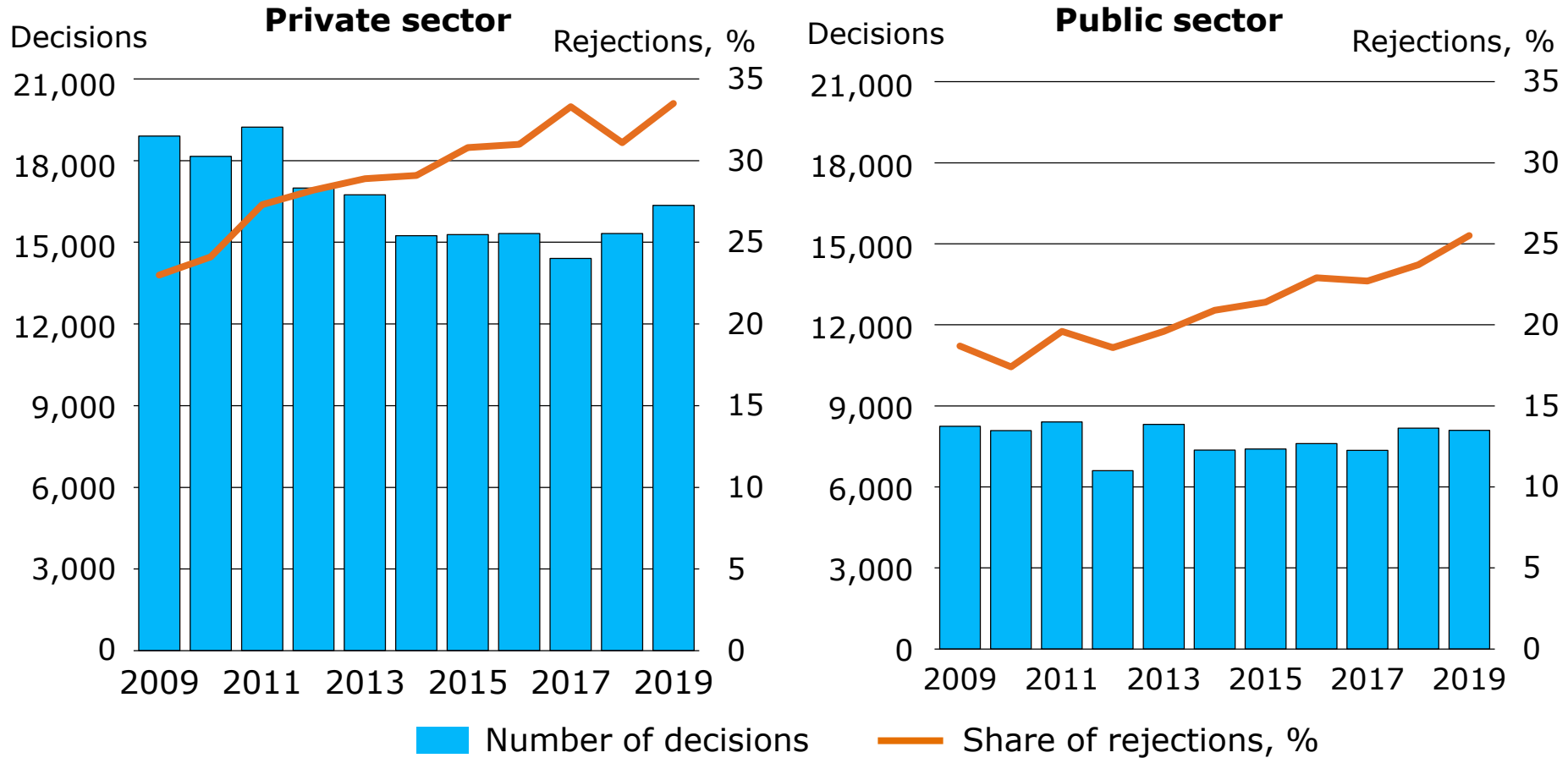
Number of disability pension decisions* in the earnings-related pension scheme and share of rejections, 2009–2019



*Decisions on new applications.



Number of disability pension decisions* in the earnings-related pension scheme and share of rejections according to sector, 2009–2019

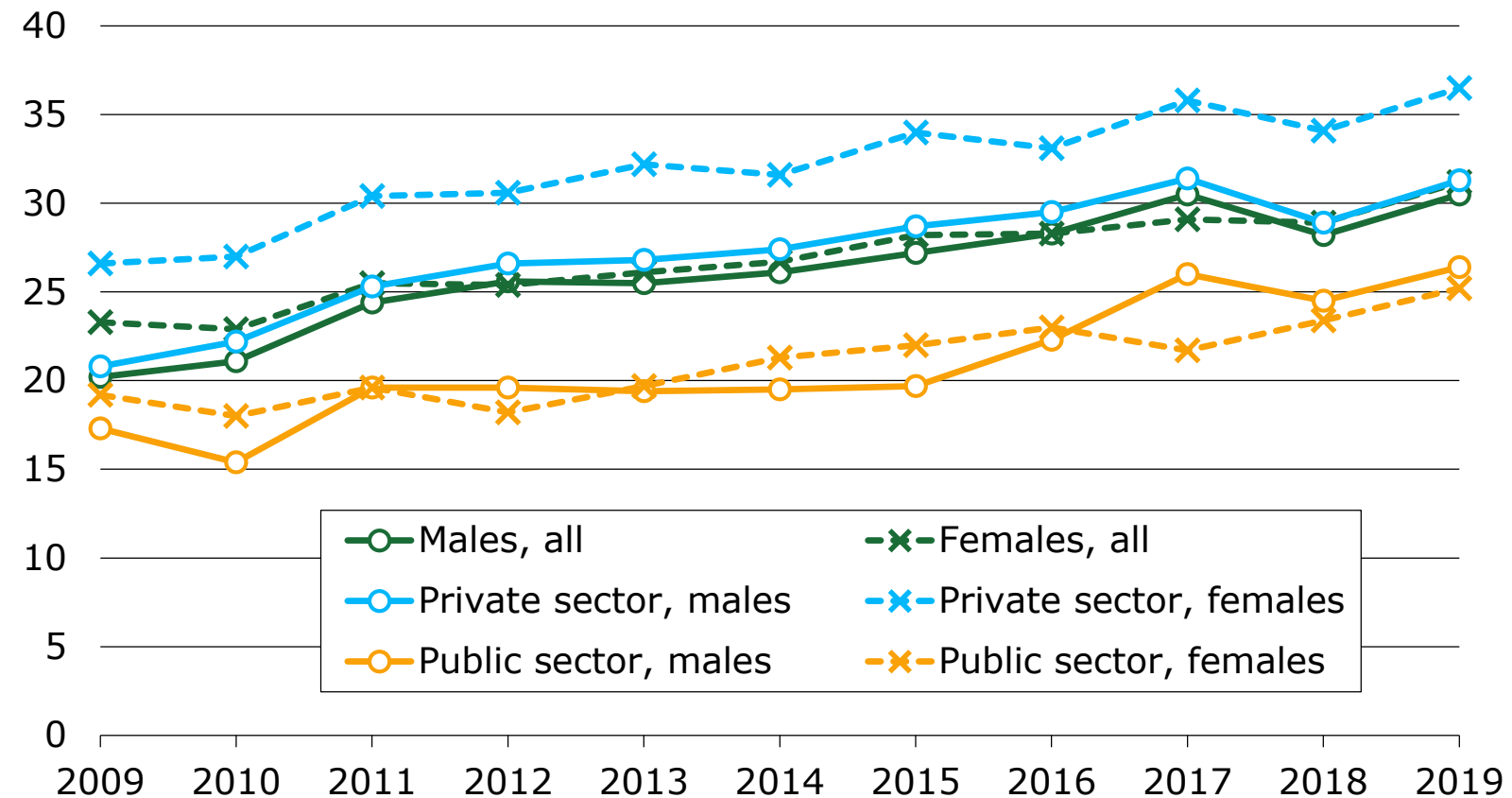


*Decisions on new applications.



Share of rejections in disability pension decisions* of the earnings-related pension scheme according to sector and gender, 2009–2019

Share of rejections, %

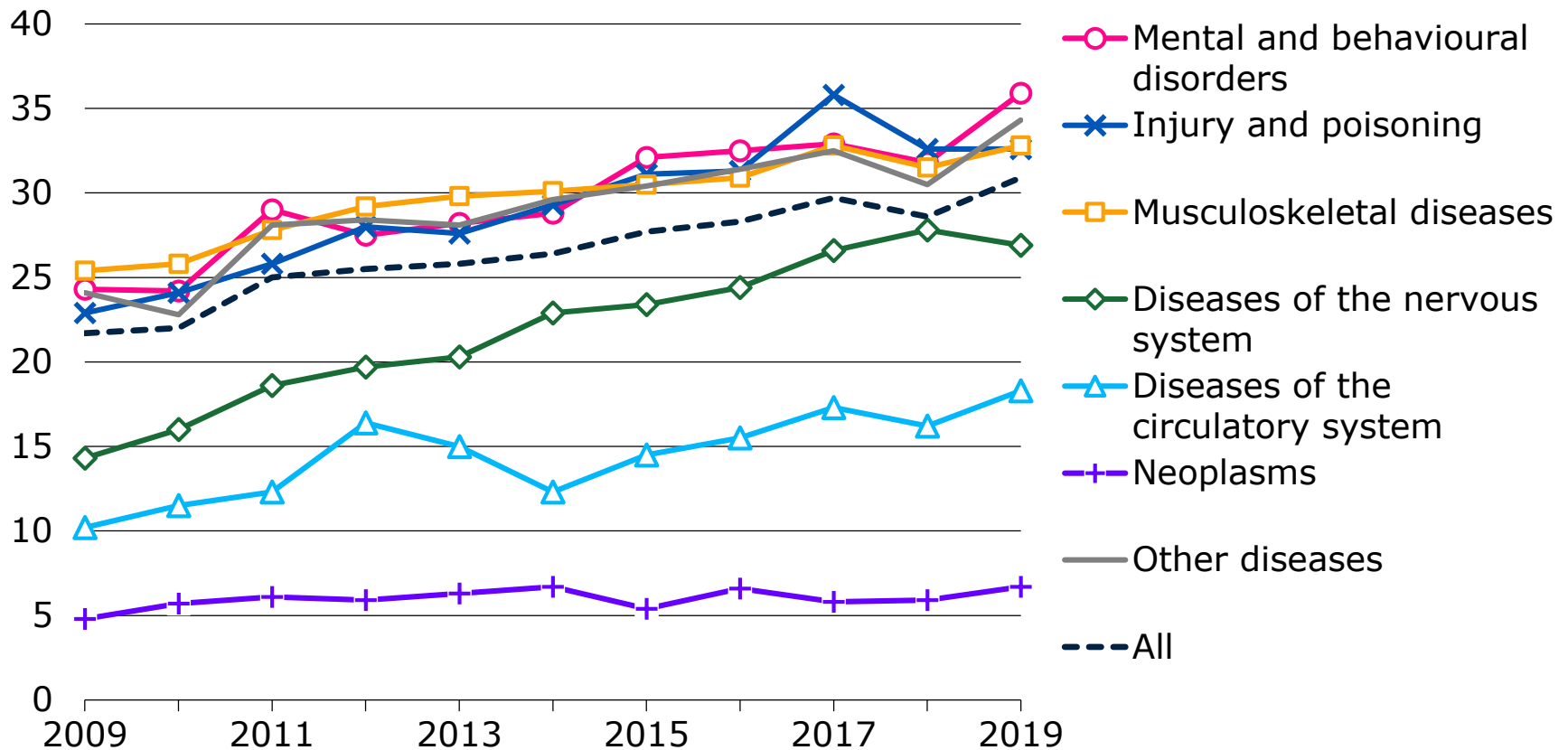


*Decisions on new applications.



Share of rejections in disability pension decisions* of the earnings-related pension scheme according to main disease classification, 2009–2019

Share of rejections, %

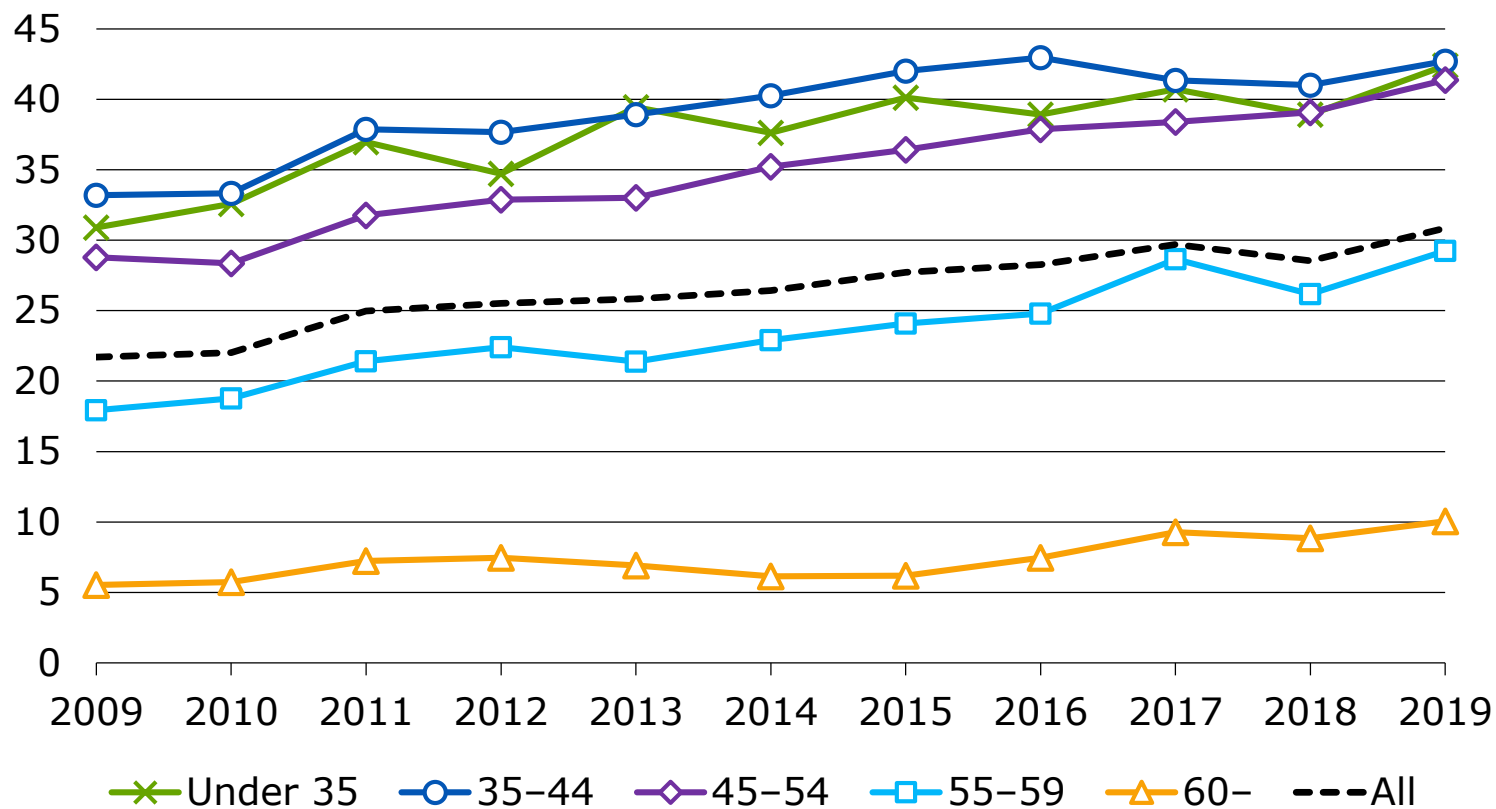


*Decisions on new applications.



Share of rejections in disability pension decisions* of the earnings-related pension scheme according to age group, 2009–2019

Share of rejections, %



*Decisions on new applications.

